

## Linksys RT31P2

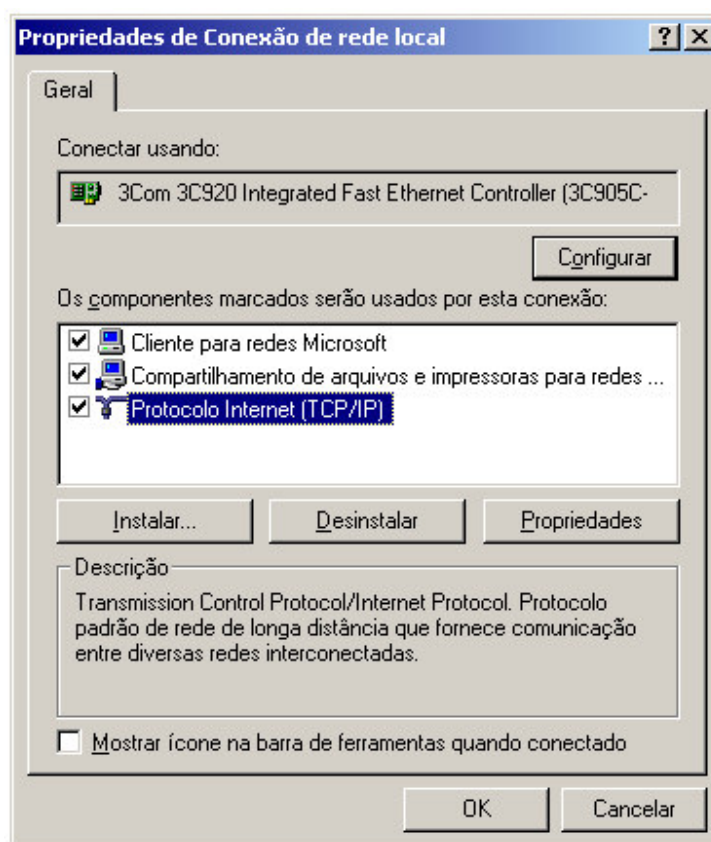
Configurando o computador para acessar as configurações do equipamento:

Você deverá deixar o seu computador conectado na porta LAN do seu RT31P2 e o mesmo deverá oferecer o IP automaticamente.

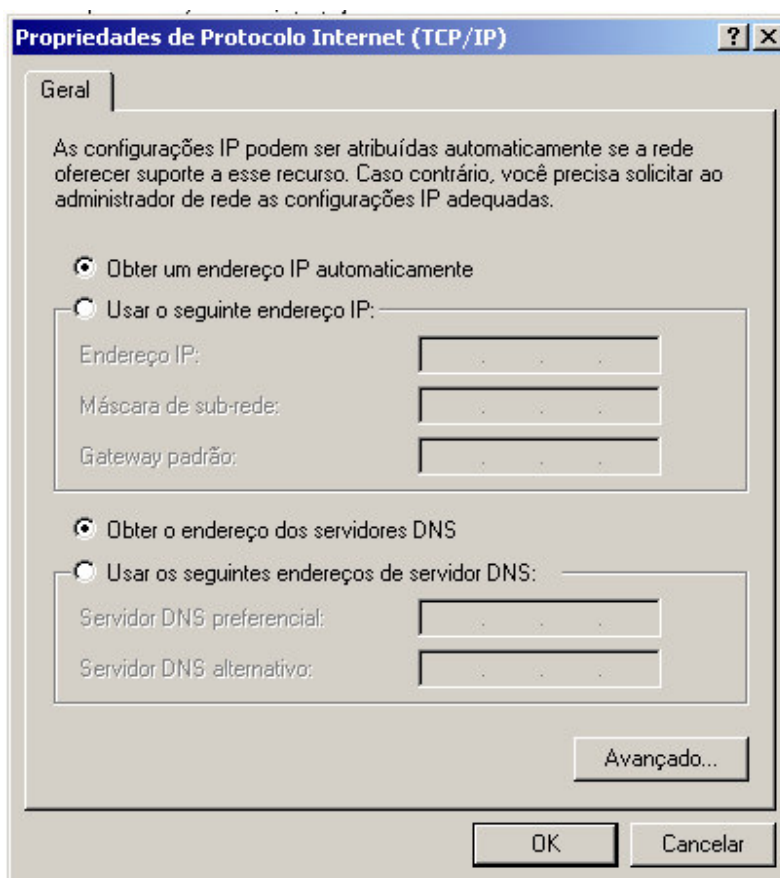
Para realizar a configuração para que o computador ofereça o IP automaticamente, siga os passos abaixo:

- Clique em Iniciar -> Configurações -> Painel de Controle;
- Abra a pasta Conexões dial-up e de rede;
- Clique com o segundo botão do mouse (geralmente o da direita) em Conexão de rede local e logo após clique com o primeiro botão (geralmente o da esquerda) em propriedades;

Aparecerá a seguinte tela:

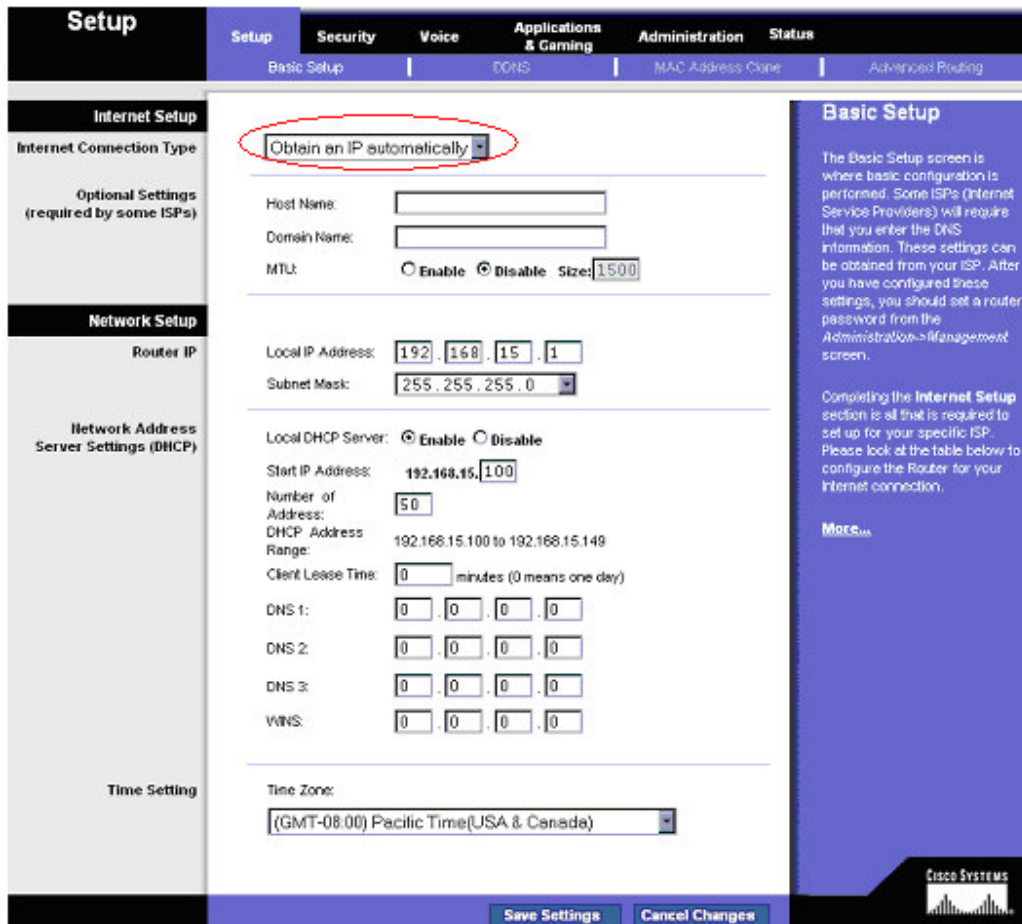


Clique em cima de Protocolo Internet (TCP/IP) e logo após em Propriedades e sinalize as opções Obter um endereço IP automaticamente e Obter o endereço dos servidores DNS, conforme a figura abaixo:



Para acessar as configurações do ATA, insira o endereço 192.168.15.1 no Internet Explorer e o usuário e senha de acesso é **admin** e **admin**.

Na tela abaixo, você poderá configurar o padrão de internet. Após configurar salve e siga os passos abaixo.



**Setup**

Setup | Security | Voice | Applications & Gaming | Administration | Status

Basic Setup | DNS | MAC Address Clone | Advanced Routing

**Internet Setup**

Internet Connection Type: **Obtain an IP automatically**

Optional Settings (required by some ISPs)

Host Name:

Domain Name:

MTU:  Enable  Disable Size:

**Network Setup**

Router IP

Local IP Address:

Subnet Mask:

Local DHCP Server:  Enable  Disable

Start IP Address:

Number of Address:

DHCP Address Range: 192.168.15.100 to 192.168.15.149

Client Lease Time:  minutes (0 means one day)

DNS 1:

DNS 2:

DNS 3:

WINS:

Time Setting

Time Zone:

**Basic Setup**

The Basic Setup screen is where basic configuration is performed. Some ISPs (Internet Service Providers) will require that you enter the DNS information. These settings can be obtained from your ISP. After you have configured these settings, you should set a router password from the Administration->Management screen.

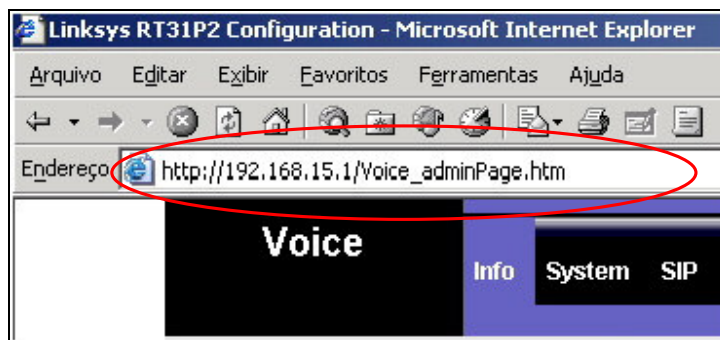
Completing the Internet Setup section is all that is required to set up for your specific ISP. Please look at the table below to configure the Router for your Internet connection.

[More...](#)

Save Settings | Cancel Changes

CISCO SYSTEMS

1. Após a versão do RT31P2 for 2.0.13 (Lib) Recomendamos que você acesse o link [http://192.168.15.1/Voice\\_adminPage.htm](http://192.168.15.1/Voice_adminPage.htm), e faça as seguintes alterações abaixo:



- Clique em **Provisioning**, altere a opção **circulada em vermelho** e logo em seguida clique em **Save Settings**;

**Voice** Info System SIP **Provisioning** Regional Line 1 Line 2 User 1 User 2

Advanced View (switch to basic view) User Login

**Configuration Profile**

Provision Enable:	no	Resync On Reset:	yes
Resync Random Delay:	2	Resync Periodic:	3600
Resync Error Retry Delay:	3600	Forced Resync Delay:	14400
Resync From SIP:	yes	Resync After Upgrade Attempt:	yes
Resync Trigger 1:			
Resync Trigger 2:			
Resync Fails On FNF:	no		
Profile Rule:	/init.cfg		
Profile Rule B:			
Profile Rule C:			
Profile Rule D:			
Log Resync Request Msg:	\$PN \$MAC -- Requesting resync \$SCHEME://\$SERVIP:		
Log Resync Success Msg:	\$PN \$MAC -- Successful resync \$SCHEME://\$SERVIP:		
Log Resync Failure Msg:	\$PN \$MAC -- Resync failed: \$ERR		
Report Rule:			

Save Settings Cancel Settings

CISCO SYSTEMS

- Ao voltar a tela, clique em **Line 1** altere as opções **circuladas em vermelho** e logo em seguida clique em **Save Settings**;

Voice		Info	System	SIP	Provisioning	Regional	Line 1	Line 2	User 1	User 2	
							Advanced View (switch to basic view)		User Login		
Streaming Audio Server (SAS)		Line Enable:	yes				SAS DLG Refresh Intvl:	30			
NAT Settings		SAS Enable:	no				NAT Keep Alive Enable:	no			
Network Settings		SAS Inbound RTP Sink:					NAT Keep Alive Dest:	\$PROXY			
SIP Settings		NAT Mapping Enable:	no				Network Jitter Level:	high			
		NAT Keep Alive Msg:	\$NOTIFY				Jitter Buffer Adjustment:	up and down			
		SIP TOS/DiffServ Value:	0x68				SIP 100REL Enable:	no			
		RTP TOS/DiffServ Value:	0xb8				Auth Resync-Reboot:	yes			
Call Feature Settings		SIP Port:	5060				SIP Remote-Party-ID:	no			
		EXT SIP Port:					SIP Debug Option:	none			
		SIP Proxy-Require:					Restrict Source IP:	no			
		SIP GUID:	no				Refer Target Bye Delay:	0			
		RTP Log Intvl:	0				Refer-To Target Contact:	no			
		Referor Bye Delay:	4				MOH Server:				
		Referee Bye Delay:	0				Conference Bridge URL:				
		Sticky 183:	no								
Proxy and Registration		Blind Attn-Xfer Enable:	no				Use Outbound Proxy:	yes			
		Xfer When Hangup Conf:	yes				Use OB Proxy In Dialog:	yes			
		Conference Bridge Ports:	3				Make Call Without Reg:	no			
		Proxy:	vono.net.br				Ans Call Without Reg:	no			
		Outbound Proxy:	vono.net.br:1571				DNS SRV Auto Prefix:	no			
		Register:	yes				Proxy Redundancy Method:	Normal			
		Register Expires:	3600								
		Use DNS SRV:	yes								
		Proxy Fallback Intvl:	3600								
		Voice Mail Server:									
Subscriber Information		Display Name:	vono				User ID:	LOGIN_VONO			
		Password:	SENHA_VONO				Use Auth ID:	no			
		Auth ID:									
		Mini Certificate:									
		SRTP Private Key:									

Supplementary Service Subscription	
Call Waiting Serv:	yes
Block ANC Serv:	yes
Cfwd All Serv:	yes
Cfwd No Ans Serv:	yes
Cfwd Last Serv:	yes
Accept Last Serv:	yes
CID Serv:	yes
Call Return Serv:	yes
Three Way Call Serv:	yes
Attn Transfer Serv:	yes
MVM Serv:	yes
Speed Dial Serv:	yes
Referral Serv:	yes
Service Announcement Serv:	no
Block CID Serv:	yes
Dist Ring Serv:	yes
Cfwd Busy Serv:	yes
Cfwd Sel Serv:	yes
Block Last Serv:	yes
DND Serv:	yes
CWCID Serv:	yes
Call Back Serv:	yes
Three Way Conf Serv:	yes
Unattn Transfer Serv:	yes
VMMI Serv:	yes
Secure Call Serv:	yes
Feature Dial Serv:	yes

Audio Configuration	
Preferred Codec:	G729a
Use Pref Codec Only:	no
G729a Enable:	yes
G723 Enable:	yes
G726-16 Enable:	yes
G726-24 Enable:	yes
G726-32 Enable:	yes
G726-40 Enable:	yes
FAX Codec Symmetric:	yes
DTMF Tx Method:	Auto
Hook Flash Tx Method:	None
Release Unused Codec:	yes
Silence Supp Enable:	no
Silence Threshold:	medium
Echo Canc Enable:	yes
Echo Canc Adapt Enable:	yes
Echo Supp Enable:	yes
FAX CED Detect Enable:	yes
FAX CNG Detect Enable:	yes
FAX Passthru Codec:	G711u
FAX Passthru Method:	NSE
FAX Process NSE:	yes
FAX Disable ECAN:	no

Dial Plan	
Dial Plan:	[*xx]*[3469]11000[2-9]xxxxx1xxx[2-9]xxxxxS0xxxx
Enable IP Dialing:	no
Emergency Number:	

FXS Port Polarity Configuration	
Idle Polarity:	Forward
Caller Conn Polarity:	Forward
Callee Conn Polarity:	Forward

Assim o seu ATA estará configurado e funcionando corretamente com o Serviço Vono. Caso haja alguma irregularidade, recomendamos que você tente refaça a configuração.



### Configurando o RT31P2 para que a secretária funcione corretamente:

Para acessar a secretária eletrônica através do seu ATA, recomendamos que você diga os passos abaixo:

- 1) Acesse as configurações do seu ATA, através do link [http://192.168.15.1/Voice\\_adminPage.htm](http://192.168.15.1/Voice_adminPage.htm)
- 3) Entre nas configurações de Line 1 e altere as seguintes configurações:

Preferred codec: G711u  
Use Preferred Codec: yes  
DTMF Tx Method: Auto

The screenshot shows the configuration page for a Cisco ATA device, divided into several sections:

- Supplementary Service Subscription:** A list of services with dropdown menus, all set to 'yes' except for 'Service Announcement Serv.' which is 'no'.
- Audio Configuration:** Contains settings for codecs and features. 'Preferred Codec' is set to 'G711u', 'Use Pref Codec Only' is 'yes', and 'DTMF Tx Method' is 'Auto'. Other settings include 'G729a Enable' through 'G726-40 Enable' (all 'yes'), 'FAX Codec Symmetric' ('yes'), 'Hook Flash Tx Method' ('None'), and 'Release Unused Codec' ('yes'). On the right side, 'Silence Supp Enable' is 'no', 'Silence Threshold' is 'medium', 'Echo Canc Enable' is 'yes', 'Echo Canc Adapt Enable' is 'yes', 'Echo Supp Enable' is 'yes', 'FAX CED Detect Enable' is 'yes', 'FAX CNG Detect Enable' is 'yes', 'FAX Passthru Codec' is 'G711u', 'FAX Passthru Method' is 'NSE', 'FAX Process NSE' is 'yes', and 'FAX Disable ECAN' is 'no'.
- Dial Plan:** Shows a dial plan string: ["xx]"\*x[3469]11|0|0|[2-9];xxxxx|1xxx[2-9];xxxxxS0|xxxx; and 'Enable IP Dialing' is 'no'.
- FXS Port Polarity Configuration:** 'Idle Polarity' and 'Callee Conn Polarity' are both set to 'Forward'. 'Caller Conn Polarity' is also set to 'Forward'.
- Emergency Number:** An empty text field.

At the bottom, there are 'Save Settings' and 'Cancel Settings' buttons. The Cisco Systems logo is visible in the bottom right corner.

Salvando essas configurações você conseguirá acessar a sua secretária através do seu ATA.